

PRIVATE COLLECTION ANGEL GUSTAVO

After the Artist's passing July 2024, the family has been inventorying his entire collection with higher quality photos. This list will be updated continuously as we go through his work in his various Art studios around Spain. It is a treasure trove of paintings and sketches and paintings that have not been previously catalogued. Watch this space!

MAJESTIC HORSE

1m x 0,81m

2021



HOMMAGE TO THE FEMALE FARMER

1m x 0,81m

2022



A TOAST TO NATURE

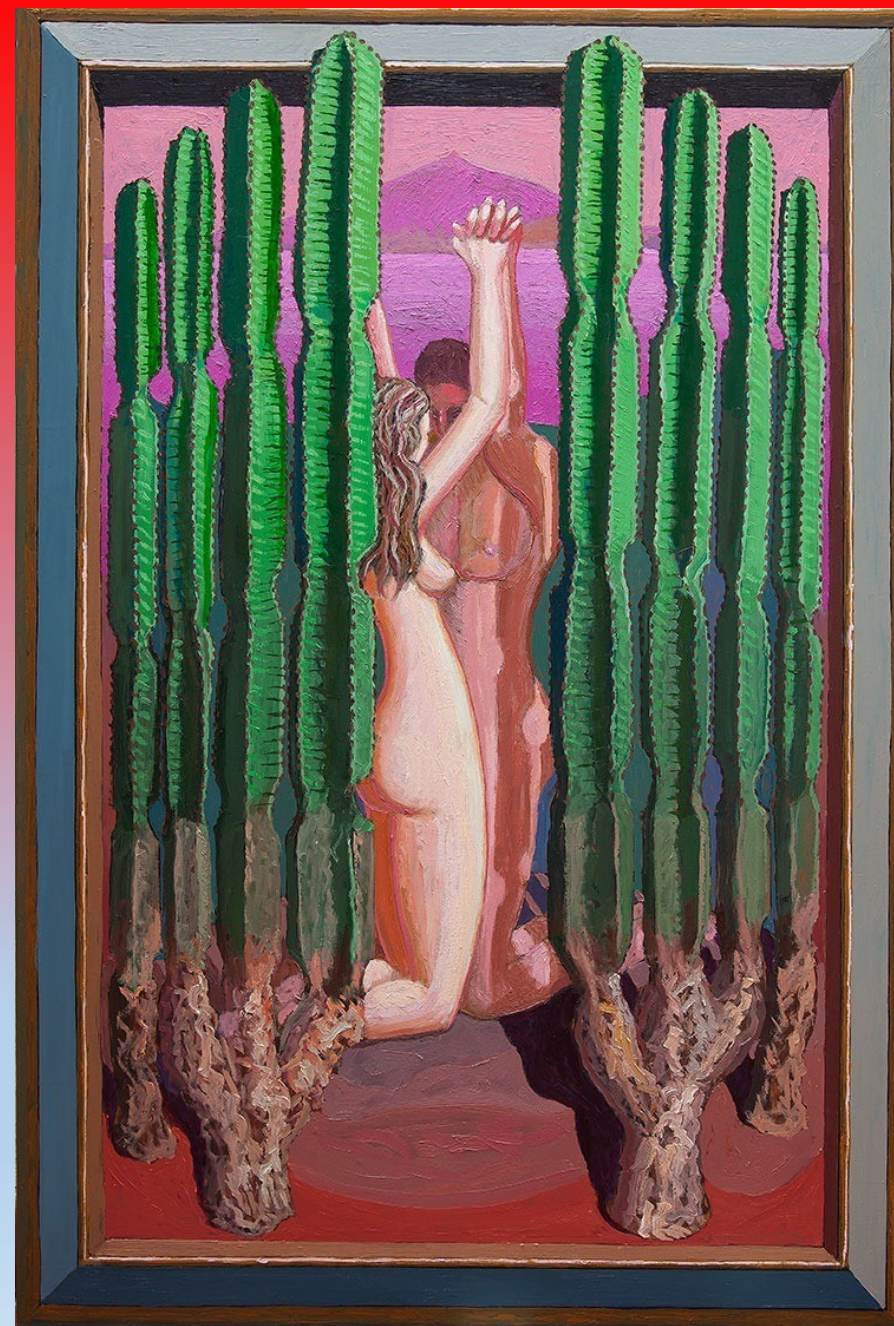
1m x 0,81m

2022



HIDDEN LOVE - 2022

1,22M X 0,81M



THE FIGHT BETWEEN GOOD AND EVIL

Archetypal fight of two mystical creatures
symbolizing the forces of Evil and Good
In backdrop of the COVID19 pandemic

1,22m x 0,81m

2020





MIDDLE EAST PROSPERITY – CONCEPT OF MURAL – 2,50m X 0,60m - 2022



HEAD OF BED - 2,10m x 1,20m – 2021

A gift of the Artist to his daughter and her husband
for saving his life in China when he had his first brain stroke



MANDATORY VACCINATION – CONCEPT OF MURAL 2021 – 1M X 0,80M



THE COVID19 VACCINE – CONCEPT OF MURAL – 1,22m x 0,80m - 2021

During 18 months the COVID19 vaccinations have been causing controversy and confusion. Inside feeling an extreme drought and outside it seemed greener every day



THE PANDEMIC – CONCEPT OF MURAL - 2020
The beginning of the COVID19 Pandemic
1,62m x 0,80m

SPANISH FLAMENCO TWINS

1M X 1M

2020

This painting comes with a truly unique story. The Artist was in China before and during the initial parts of the outbreak. He painted this abstract Art work whilst recovering from a brain stroke that occurred only weeks prior and still waiting for major surgery, not knowing if he would survive.

He expressed nostalgic feelings of possibly never seeing his country again, dying on foreign soil during a global pandemic. This sentiment is felt in this unique piece of Art, where he painted a typical Spanish traditional scenery of a group of passionate Flamenco dancers, an important part of the vibrant soul of the Spanish people and its culture.

This painting is part of one collection, a twin with the following painting "INTO THE BULLFIGHT"

MADE IN CHINA DURING LOCKDOWN



INSIDE THE BULLFIGHT

1M X 1M

2020

Spectacular painting where the Artist draws you into the actual bullfight, a Spanish century old tradition of elegantly managing the brute force of this powerful animal. It is a brilliant display of invading the space of the spectator by creating a 3D effect, where the Bull seems to leap out of the painting. This painting is a symbol for harnessing Power.

This painting comes with a truly unique story. The Artist was in China before and during the initial parts of the outbreak. He painted this powerful Art work whilst recovering from a brain stroke that occurred only weeks prior and still waiting for major surgery, not knowing if he would survive.

He expressed nostalgic feelings of possibly never seeing his country again, dying on foreign soil during a global pandemic.

This sentiment is felt in this unique piece of Art, where he draws personal strength from this typical Spanish traditional scenery of a Bullfight, an important part of the vibrant soul of the Spanish people and its culture.

This painting is part of one collection, a twin with the previous painting "SPANISH FLAMENCO TWINS"

MADE IN CHINA DURING LOCKDOWN



**MANKIND MAKING IT THROUGH THE
CORONA PART 1
1M X 1M
2020**

This painting comes with a truly unique story. It was actually made in China during the initial Corona virus outbreak. The Artist painted this abstract Art work whilst recovering from a brain stroke that occurred only weeks prior and still waiting for major surgery, not knowing if he would survive.

It symbolises his own struggles and deep thoughts of himself and mankind's struggle and it is literally finding a way through the COVID19 pandemic, as it is depicted as the bright DNA strain. Part of a collection of two paintings.

MADE IN CHINA DURING LOCKDOWN



**MANKIND MAKING IT THROUGH THE
CORONA PART 2
1M X 1M
2020**

This painting comes with a truly unique story. It was actually made in China during the initial Corona virus outbreak. The Artist painted this abstract Art work whilst recovering from a brain stroke that occurred only weeks prior and still waiting for major surgery, not knowing if he would survive.

This second painting of a series of two is the Artist's own prediction of hope, soon to be able to celebrate freedom once again after defeating the COVID19 challenge. It is a true symbol for the rising from the ashes of himself together with the Chinese People from the Covid19 pandemic shortly after springtime 2020. Part of a collection of two painting

MADE IN CHINA DURING LOCKDOWN



LOOKING FOR FREEDOM

(122cm x 90cm)

2019

The absolute most recent work of the Artist, never before been on display anywhere in the world. It is one of a collection of four paintings.

The strong desire of the powerful majestic creature fighting its way to freedom makes it jump out of the canvas. Brilliant use of the full spectrum of all shades of white.



CHALLENGE IN THE MUD

(122cm x 90cm)

2019

The absolute most recent work of the Artist, never before been on display anywhere in the world. It is one of a collection of four paintings.

The strong desire of the powerful majestic creature fighting its way to freedom makes it jump out of the canvas. Like most life forces, almost impossible to tame.



MAJESTIC BLACK HORSE
(122cm x 90cm)
2019

The absolute most recent work of the Artist, never before been on display anywhere in the world. It is one of a collection of four paintings.

This thorough bred horse is a symbol of power and wealth. It is painted in many shades of black over its full spectrum. The combination with the sheds of streaks of light is testimony to a truly skilled Artist.



THE SPIRIT ESCAPING THE DESERT
(122cm x 90cm)
2019

The absolute most recent work of the Artist, never before been on display anywhere in the world. It is one of a collection of four paintings.

Creating transparency in a painting is extremely difficult. It is another brilliant display of the Artists capability to bring a painting to life.



HOMAGE TO A MYSTICAL CREATURE 2/2
(1,22M X 1,22M)
2018

The second of a collection of four brilliant Art Works dedicated to the majestic white Rhinoceros, an animal at the verge of extinction.

Contrary to the irony of the Artist, this mystic creature cannot be tamed. It is the symbol of absolute power, force and strong mindedness.

The sheer power and symbology in Chinese mythology will no doubt inspire great fortune upon whoever will have this fine masterpiece in possession.



HOMAGE TO A MYSTICAL CREATURE 1/2

(1,22M X 1,22M)
2018

The first of a collection of four brilliant Art Works dedicated to the majestic white Rhinoceros, an animal at the verge of extinction.

Contrary to the irony of the Artists interpretation, this mystic creature cannot be tamed. It is the symbol of absolute power, force and strong mindedness.

The sheer power and symbology in Chinese mythology will no doubt inspire great fortune upon whoever will have this fine masterpiece in possession.



RHINO IN FREEDOM
(1,22M X 1,22M)
2019

The third of a collection of brilliant Art Works dedicated to the majestic white Rhinoceros, an animal at the verge of extinction.

Contrary to the irony of the Artist, this mystic creature cannot be tamed. It is the symbol of absolute power, force and strong mindedness.

The sheer power and symbology in Chinese mythology will no doubt inspire great fortune upon whoever will have this fine masterpiece in possession.



RHINO AT EXTINCTION
(1,22M X 1,22M)
2019

The fourth of a collection of four brilliant Art Works dedicated to the majestic white Rhinoceros, an animal at the verge of extinction.

Contrary to the irony of the Artist, this mystic creature cannot be tamed. It is the symbol of absolute power, force and strong mindedness.

The sheer power and symbology in Chinese mythology will no doubt inspire great fortune upon whoever will have this fine masterpiece in possession.



HOMAGE TO THE TEMPLAR KNIGHTS

(2,00M X 1,22M)

2017

This classical Archetypal Art Work is of great symbolic significance in many parts of the world, where the spirit of this ancient Brotherhood is still very much alive.

The Artist has captured with great success all detail of its symbology and importance in history. A truly great masterpiece that has been painted on assignment of an affluent member of Spanish society. Similar themes can be made on individual requests in agreement with the Artists artistic expression.



ONE THOUSAND WAYS TO LOVE
1,22M X 0,81M
2015

**Free Interpretation on the many
different ways to love.
The magic between two lovers is
so intense that it can be produced
in any situation anywhere.**



THE SPIRIT REMEMBERS

1,22M X 0,81M

2015

The soul of the girl is roaming her previous paths. The tree remembers her and attempts to reach out to her soul in an attempted embrace. Brilliant multi-dimensional story in a 3D display.



QUANTUM LEAP

1,22

M X 0,81M

2015

The souls of the etheric spirits of our forefathers, shaped as 3 female figures, are lifting up our planet Earth. Our ancestors guide and elevate us to make us prosper. A philosophy very much aligned with ancient Chinese family traditions.



STOP THE FEAR OF THE UNKNOWN
80CM X 61CM
2013

In life we spend 85% of our time worrying about things that will never happen. This work of Art is a reflection of the troubled soul of the Artist at that time and how with this painting left this feeling behind. It reflects the human capacity of hope and recovery of the human spirit.

The painting is a beautiful combination of the evolution of the artist depicting the dynamic form of the human anatomy in the Artists characteristic style and the 3D invasion of the space of the spectator.



**VENUS TRAPPED ON CANVAS
(95m X 1,4M) 1989**

**One of his true master pieces
from his private collection.
It is not for sale, 1-time
certified copies limited.**

**The Artist defied his King. The
King could not have the
original Muse and he could
not buy the painting either.**



THE APPLE OF EDEN (1m x 1m)

Through the Apple of Eden sees the eye of God..

Spectacular painting, vivid penetrating colors..one of his most recent Art Works

Year 2012



My Muse
1,22m x 1m
2012

It is a 3D display of the Artist painting his Muse. There is a spectacular display of 3D in which parts of the painting seems to come out of its confined space and invade the perception of the spectator.

Very vivid display of almost fluorescent colors.



The announcement
1,22m x 1m
2011

The Angel of the Lord
announced the miracle of the
birth of Christ..



Still life
43cm x 44cm
2010

Spectacular 3D effect

Still life with a brilliant twist



Still life

61cm x 61cm

2010

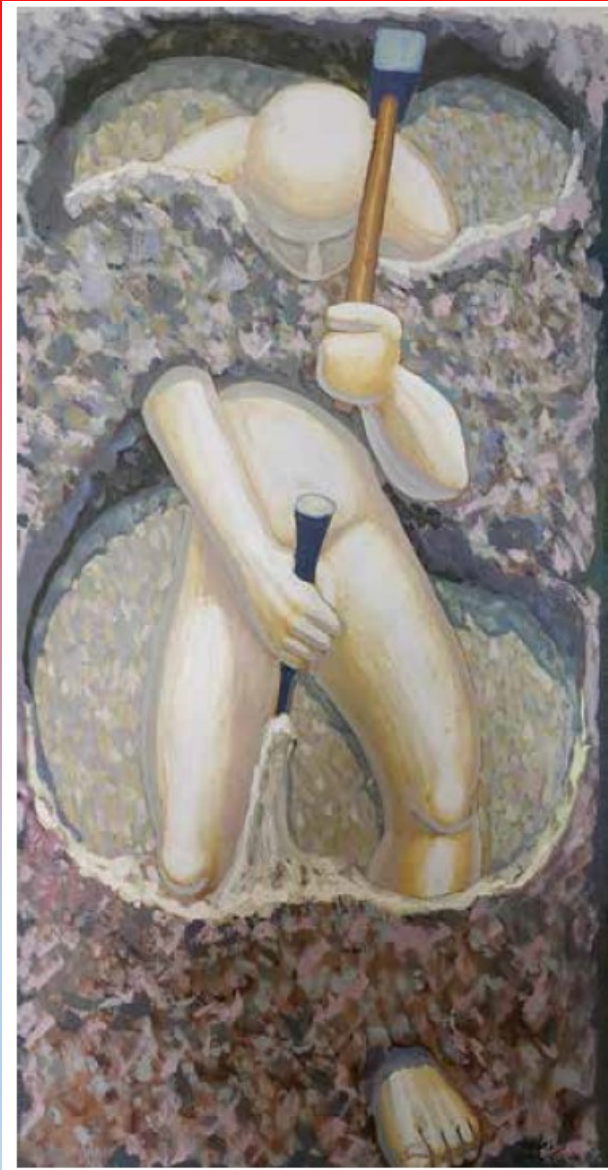
Spectacular 3D effect

Still life with a brilliant twist





1,22m x 0,60m



1,22m x 0,60m



1,20m x 0,90m

Venus of the Pearl

81cm x 1m

2010

Venus is posing on top of the Pearl being held by the hands of its creator, coming through the canvas.

The reflection of the fingers seen on the Pearl with its amazingly vivid color display is a true testimony to the creativity and skill level of the Artist. The hands truly reach outward towards the spectator.

Belong to the collection
'my Venus'
3D-masterpiece.



Domination of woman

81cm x 1m

2010

Belong to the collection

'my Venus'

3D-masterpiece.

Extremely vivid colors.

Powerful display of the ancient gladiator games where the slaves had to break the neck of the Bull without harming the woman attached to its horns.



The violinist
81cm x 1m
2010

Legend of the Venus
converting her music into
beautiful butterflies, flying
outside of the painting
towards the spectator.

Belong to the collection
'my Venus'
3D-masterpiece.
Extremely vivid colors.



The liberation of women

81cm x 1m

2010

Belong to the collection

'my Venus'

3D-masterpiece.

Extremely vivid colors.



Woman on top of her world

81cm x 1m

2010

Belong to the collection

'my Venus'

3D-masterpiece.

Extremely vivid colors.



Venus saxophonist
81cm x 1m
2010

Belong to the collection
'my Venus'
3D-masterpiece.
Extremely vivid colors.



The realities of Venus
81cm x 1m
2010

Belong to the collection
'my Venus'
3D-masterpiece.
Extremely vivid colors.



Birth of Venus

81cm x 1m

2010

Belong to the collection

'my Venus'

3D-masterpiece.

Extremely vivid colors.



Venus below the stars
81cm x 1m
2010

Belong to the collection
'my Venus'
3D-masterpiece.
Extremely vivid colors.



**Venus trapped by mother
nature
1m x 72cm
2010**

**Belong to the collection
'my Venus'
3D-masterpiece.
Extremely vivid colors.**

**Venus is the most beautiful flower
in the garden of nature. Mother
nature is claiming her back by
fusing with her and créate a
harmonious world.**



LOVE IN THE OLIVE GARDEN

122 x 61 cm

2009

This painting pre-dates the infamous Venus collection 3D-masterpiece. Extremely vivid colors.

Display of a couple in intense embrace, featuring the characteristic signature of the Artist in displaying the human anatomy



FIRE ON TOP OF LAVA

122cm x 61cm

2008

10000 USD

This painting was a unique one-off predecessor two years prior to the infamous Venus collection 3D-masterpiece. Extremely vivid colors.

Display of a couple in intense embrace, featuring the characteristic signature of the Artist in displaying the human anatomy



Still life with a creative twist

43cm x 44cm

2010

Spectacular 3D effect



46CM X 55CM



37CM X 40CM

SOLD

Still life
71cm x 61cm
2010



Still life
50cm x 50cm
2010



Still life
38cm x 55cm
2010





Still life
50cm x 50cm
2010

Still life
38cm x 55cm
2010



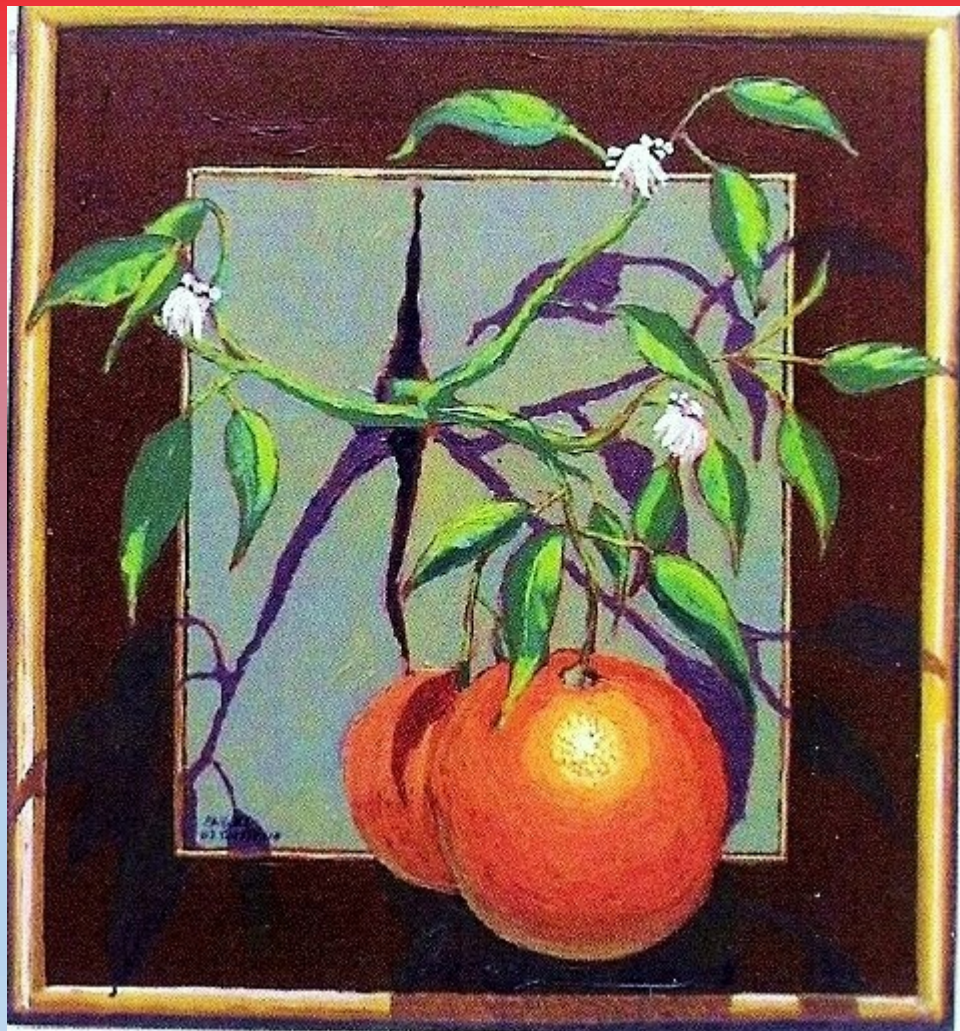
Still life
50cm x 50cm
2010



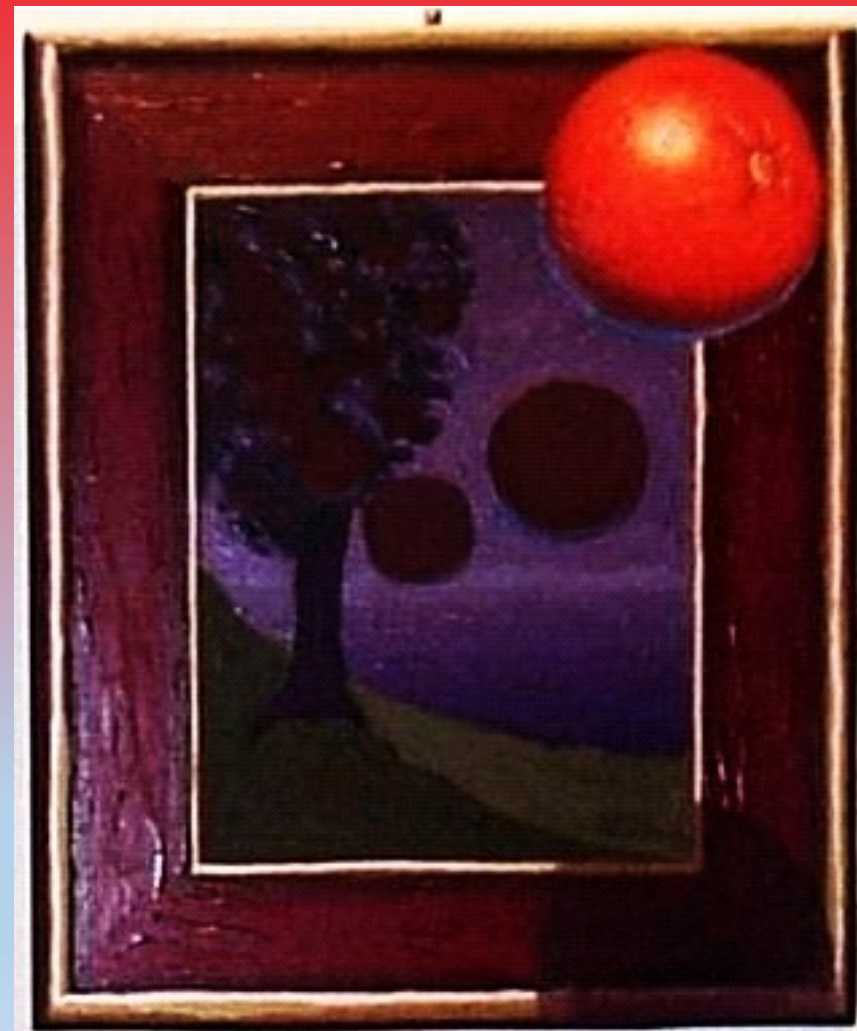
Still life
50cm x 50cm
2010



Still life 61cm x 61cm 2009



42cm x 61cm 2009



Still life 65cm x 90cm 2009



50cm x 61cm 1989



Still life 61cm x 61cm 2010



Christ dies..God lives..

60cm x 122cm

2004

**This was a concept painting
For a larger mural in a
catedral in Seville.
Beautiful 3D concept.**

**When Christ died, God
descended from the heavens
and is reaching out to offer
with his hand the bread,
symbol for the body and life
of Christ.**



**STRONG WOMAN ON A
PEDESTAL**

50cm x 65cm

2005

**Bust of the Artist's only daughter.
It is a symbol of and a testament to
his admiration for her strength of
carácter and placed high on a
brilliant 3D pedestal, invading the
space of the spectator.**

**Belongs to the private collection of
the Artist.**

FOR DISPLAY ONLY



**Kiss in the intimacy of the
garden**

1,83m x 1,22m

1992

**Intense color display, by Art
critics often compared to
Vincent van Gogh's pallet of
colors used in his later work.**



THE DAY WE BREAK THE CHAIN

1,22m x 0,61m

Ode to his father when he passed away and left
this world

1990 - 1995



**THE REBIRTH OF THE
NEO-FIGURATION
(1,50m x 1m)
1989**

**The Artist's way of breaking
the Neo-Figurations concept
that Art can only consist of
abstract line. A stroke of
genius by the Artist.**



The original sin

65cm x 90cm

1989

Beautiful 3D painting of
Eva's transformation to the
flesh because of her sin.



POWERFUL RECOVERY FROM FINANCIAL CRISIS

3,66m x 2,80m

1988

This Masterpiece is painted
on two wooden-panels.

It was a private assignment from a retired
President of one of the largest Private
Spanish Banks.

It symbolizes the power and grandure of
capitalism, but it also serves as a warning
that sometimes evil finds it way through it
and its sheer force could crush many men
in its way.

SOLD



Fighting the bull..

91cm x 122cm

1988

One of 7 Art Works remaining from private collection from his era 'Evolucion' (1980-1990)

In this era the human shape in his work takes more dominance than the rhythm of the shapes. It is the era that has seen a distinct change in style in his Art, very rare work.

It is a display of a famous traditional Spanish bull fighter who's fight is an Art in itself. There is a strong display of mankind's controversy, a duality of splendor and simultaneous cruelty.



A spontaneous death
1,83m x 1,22m
1987

Spectacular piece of Art.
Majestic elegance, one of
the most favorite pieces
In the private collection
of the artist.

PRIVATE COLLECTION



SPANISH BULL FIGHT

183cm x 122cm

1987

Classic Spanish Masterpiece
Private collection Artist.

One of 7 Art Works remaining
from private collection from his
era

'Evolucion' (1980-1990)

In this era the human shape in his
work takes more dominance than
the rhythm of the shapes.

It is the era that has seen a
distinct change in style in his Art,
very rare work.



Caught in the spotlight..

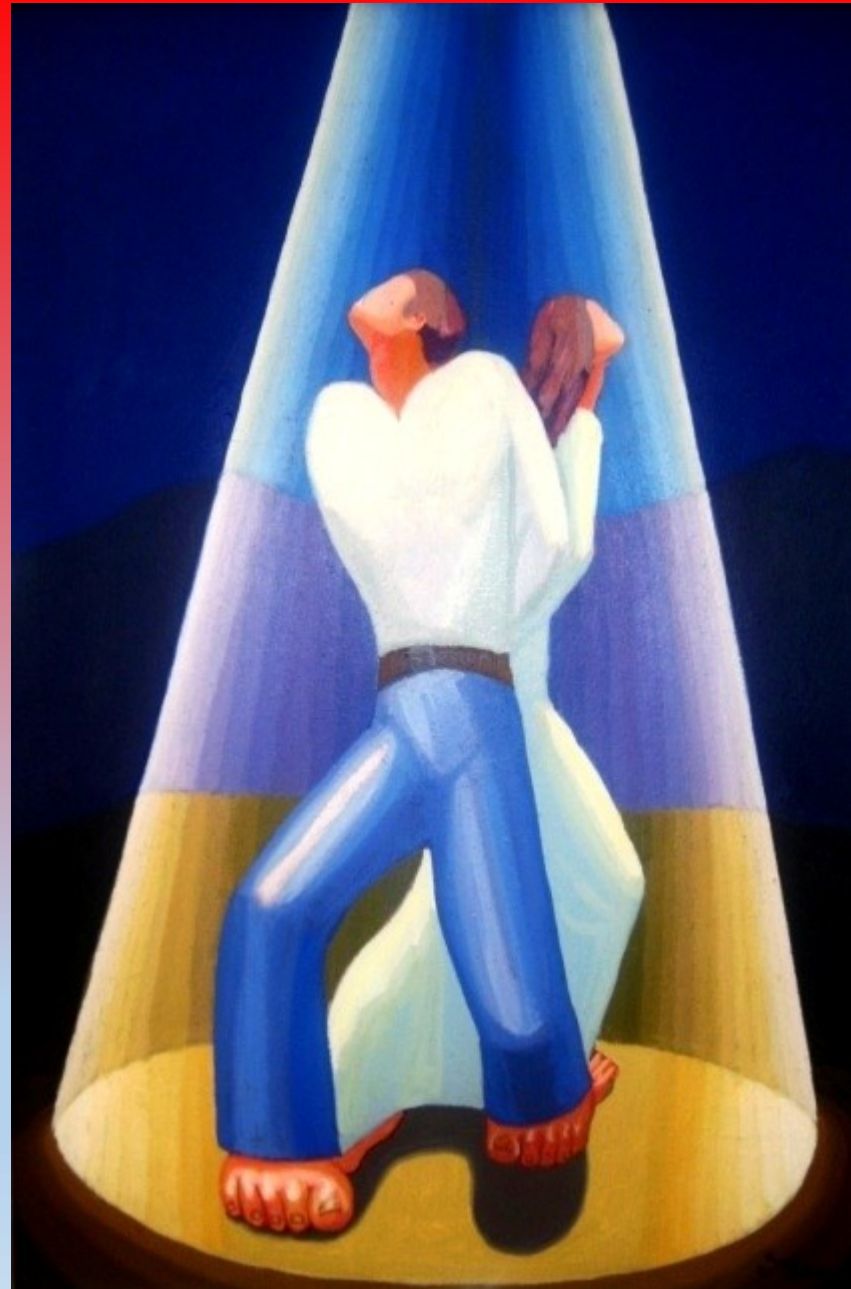
91cm x 61cm

1986

**For those that pursue
Unapproved love,
Once discovered it is difficult to
escape the spot-light of society..**

**One of 7 Art Works remaining from
private collection from his era
'Evolucion' (1980-1990)**

**In this era the human shape in his
work takes more dominance than
the rhythm of the shapes. It is the
era that has seen a distinct change
in style in his Art, very rare work.**



The Illusion of the Artist

122cm x 91cm

1985

The illusion of his Art coming
alive and embracing the
Artist..

It represents the vivid dream
of the artist where the love
for his art makes it come
alive and makes him feel the
Art loves him right back,
thanking its creator.



**Family scene
122cm x 91cm
1985**

**One of 7 Art Works
remaining from private
collection from his era
'Evolucion' (1980-1990)**

**In this era the human shape
in his work takes more
dominance than the rhythm
of the shapes. It is the era
that has seen a distinct
change in style in his Art,
very rare work.**



The Cheese man

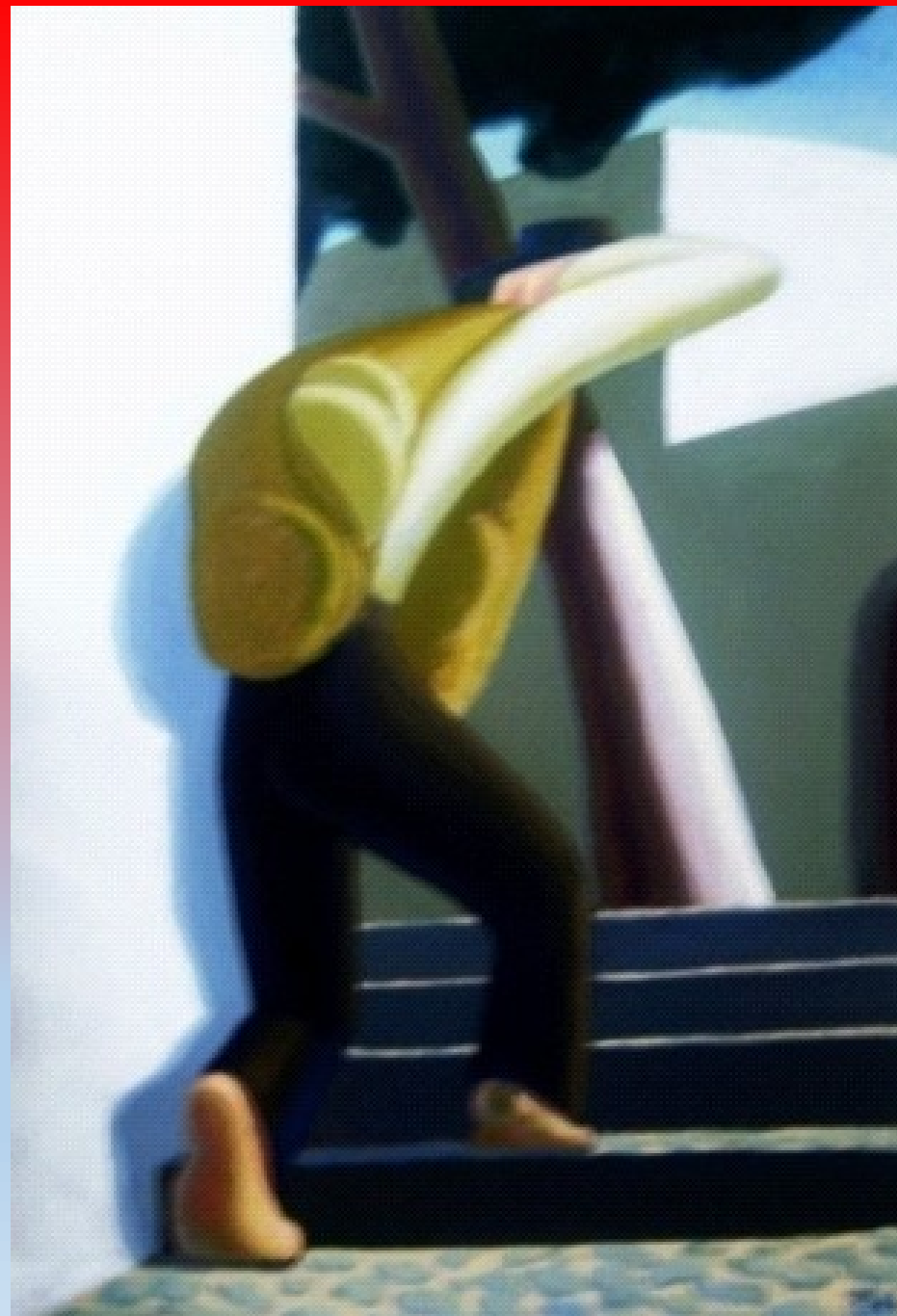
61cm x 91cm

1985

Homenaje to the place where the artist grew up. Vivid childhood memory of The Canary Island post second world war where Cheese men were still very much part of the daily life and familiar sight.

One of 7 Art Works remaining from private collection from his era 'Evolucion' (1980-1990)

In this era the human shape in his work takes more dominance than the rhythm of the shapes. It is the era that has seen a distinct change in style in his Art, very rare work.



Kiss in fall..
122cm x 91cm
1985

Idyllic Love. Very impressive play with a broad spectre of the color White, a signature of Technical Mastery.

One of 7 Art Works remaining from private collection from his era 'Evolucion' (1980-1990)

In this era the human shape in his work takes more dominance than the rhythm of the shapes. It is the era that has seen a distinct change in style in his Art, very rare work.



Love in the intimacy of a cave
122cm x 91cm
1985

The magic of the archetypical feeling of expressing being in love with absolutely no distractions.

One of 7 Art Works remaining from private collection from his era 'Evolucion' (1980-1990)

In this era the human shape in his work takes more dominance than the rhythm of the shapes. It is the era that has seen a distinct change in style in his Art, very rare work.



Dance in the fog..

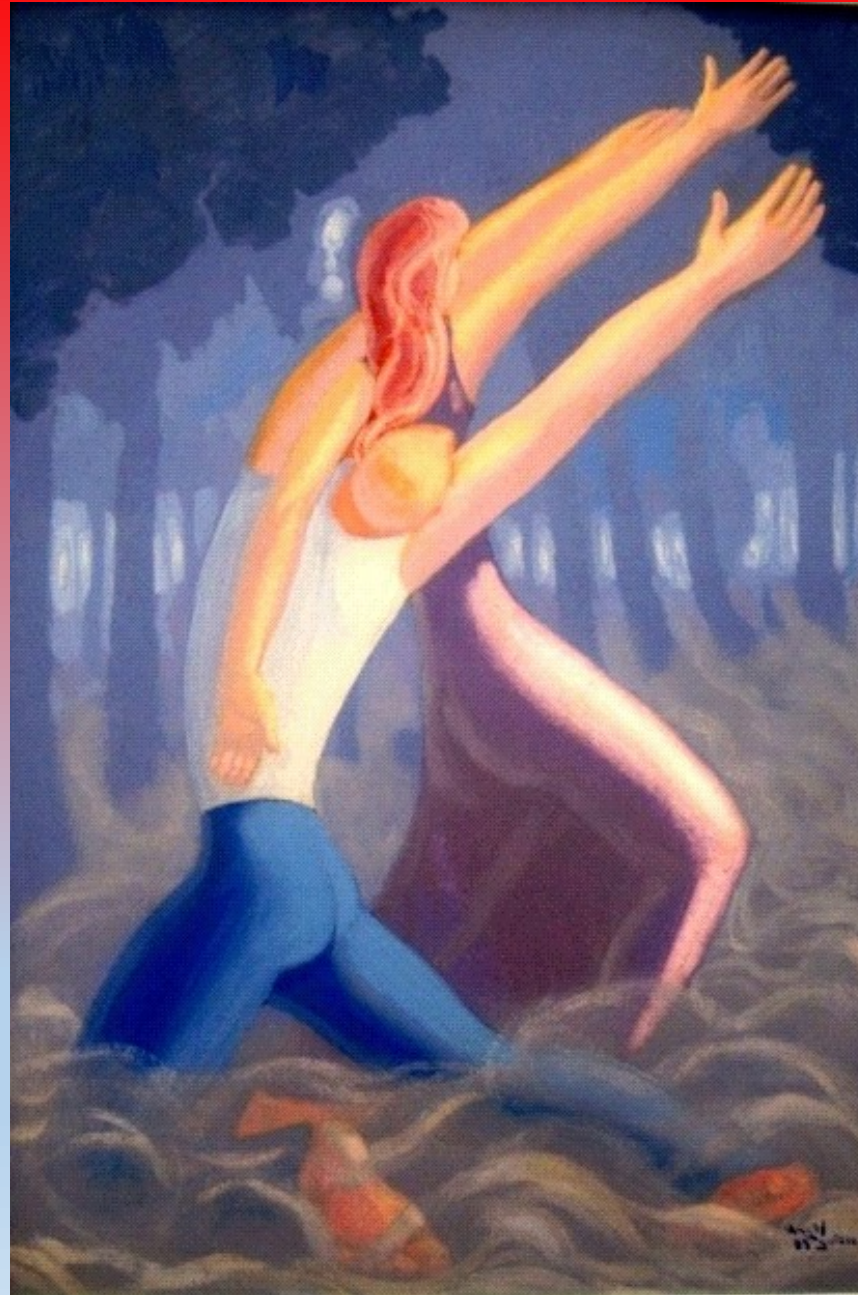
61cm x 91cm

1985

The Artist as Expressionist to depict the loving couple using the cover of the fog to freely outlive their affection.

One of 7 Art Works remaining from private collection from his era 'Evolucion' (1980-1990)

In this era the human shape in his work takes more dominance than the rhythm of the shapes. It is the era that has seen a distinct change in style in his Art, very rare work.

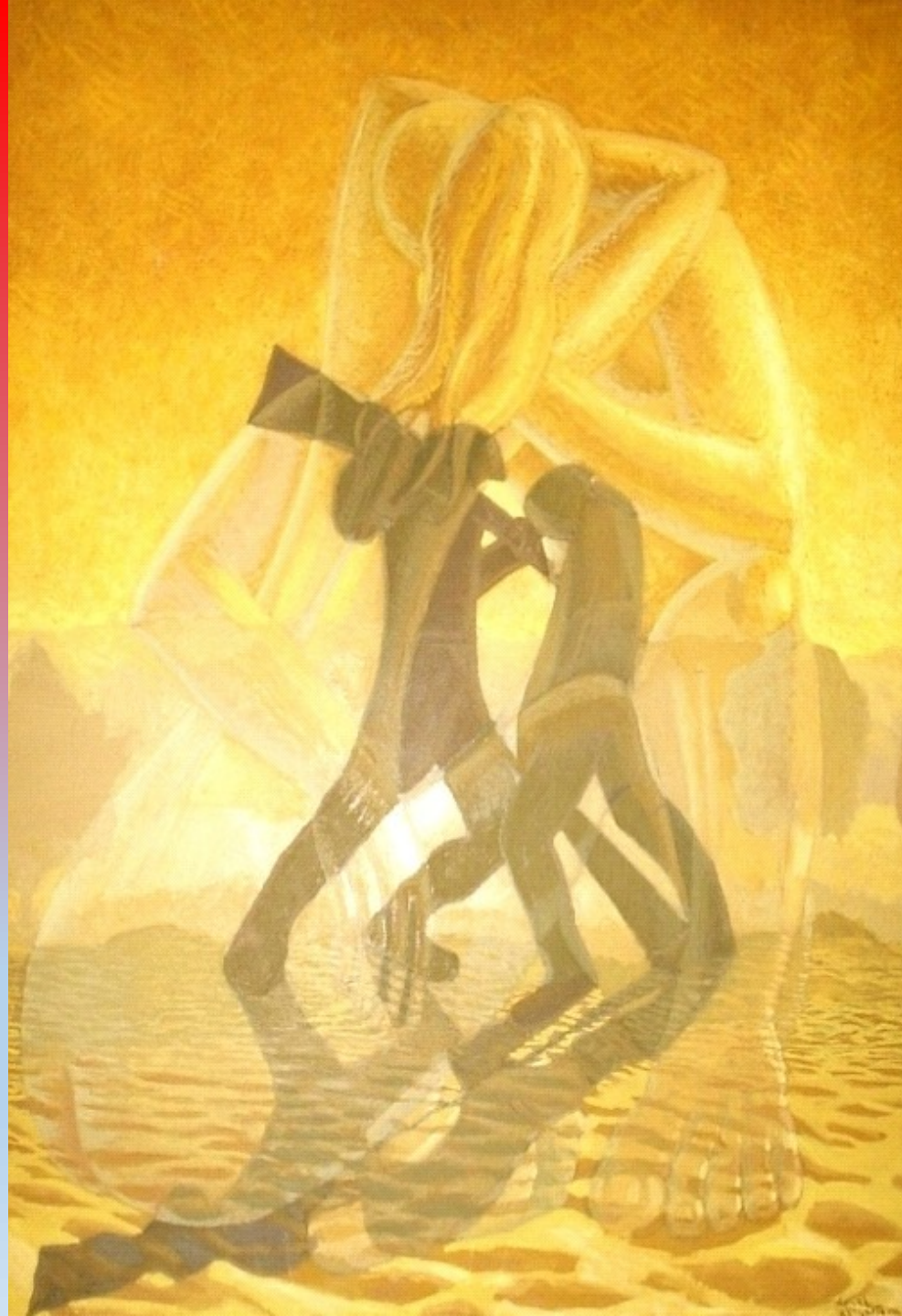


Sin..duty..insane world

1,22m x 91cm

1983

The artists way to explain the irony that in this modern insane world it is often considered a sin to love and display affection, but it is considered an honor and a duty to go to war and kill a fellow-man or die..



ALREADY IN CHINA

BATH OF SAND

62CM X 42CM

1988

Ocre using the same tones of color,
whilst maintaining his signature
rhythm over form



ALREADY IN CHINA

AFRODITES SENSUAL INNOCENCE

63CM X 39CM

1978

**Ocre using the same tones of color,
whilst maintaining his signature
rhythm over form**

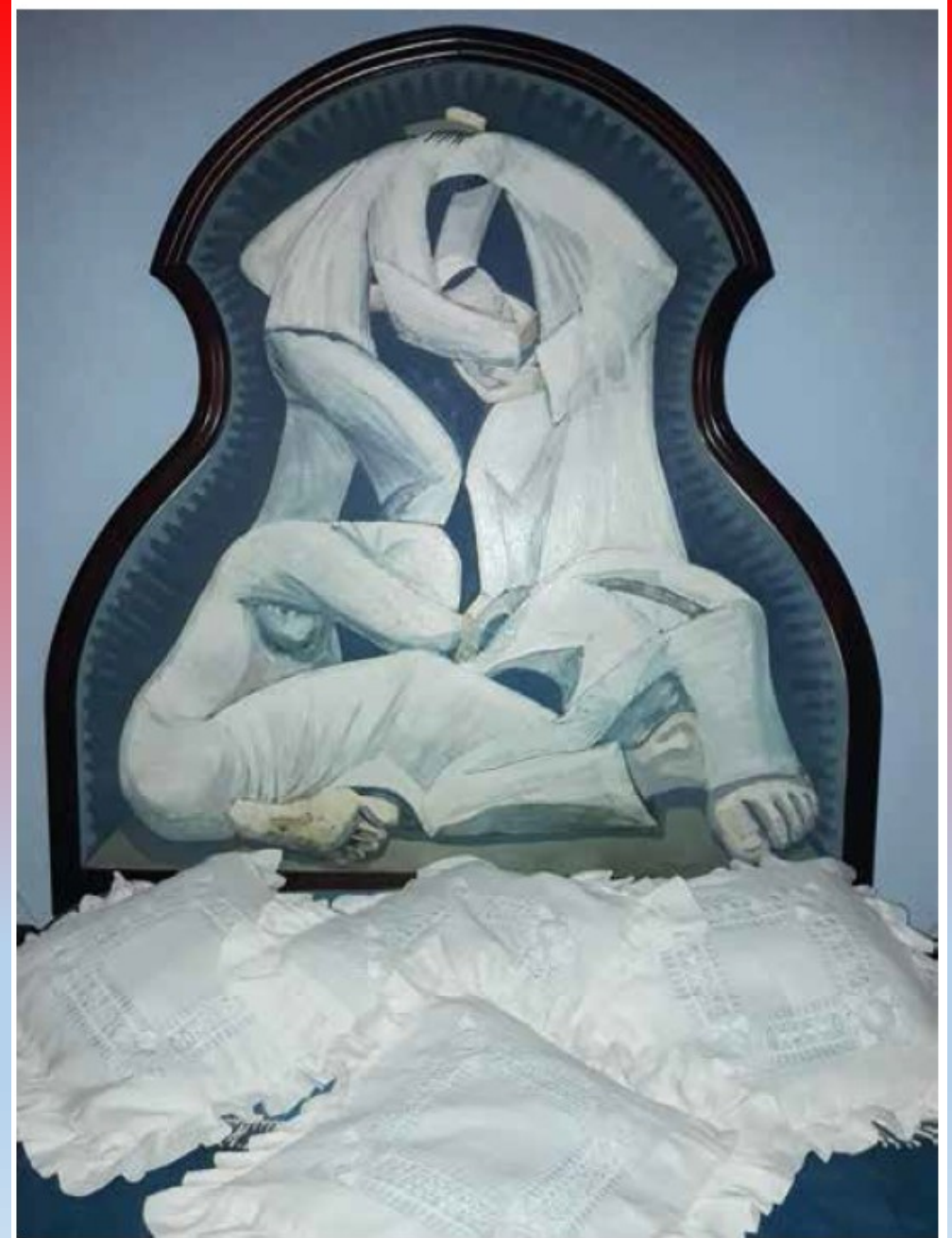
PRIVATE COLLECTION

AVAILABLE FOR DISPLAY ONLY



HEAD OF BED
1,20m x 2,10m
1975

One of his last remaining pieces from his era
RHYTHM OF THE ANATOMY OVER FORM (1971-1980)



The rocking chair

91cm x 91cm

1975

The very last remaining Art
work out of his private
collection from his era
'RHYTHM OF THE ANATOMY
OVER FORM' (1971-1980)

Belongs to his private
collection.



The Fisherman
90cm x 61cm
1975

One of the remaining Masterpieces in the Artists private collection from an era in which he was developing his signature style rhythm-over-human shape and its characteristic pronounced feet and hands.

The painting describes a traditional fisherman from the Canary Islands fishing between the typical islands lava rocks. Art Critics have put this piece in the same category of early work of Picasso due to its similar style.



Into the afterlife..
122cm x 183cm
1975

